

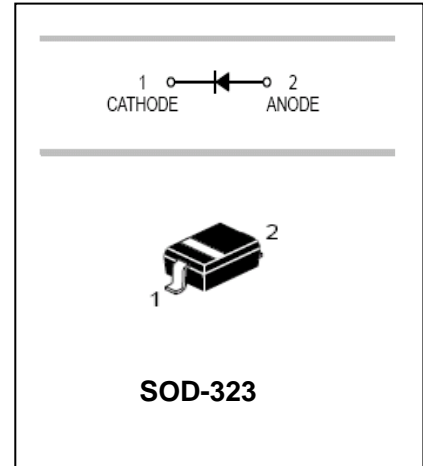
## Silicon Epitaxial Planar Diode

## 1SS380

### FEATURES

- Small surface mounting type
- High speed
- Suitable for high packing density

HF



### APPLICATIONS

- High speed switching

### ORDERING INFORMATION

Type No.	Marking	Package Code
1SS380	6D	SOD-323

### MAXIMUM RATING @ Ta=25°C unless otherwise specified

Parameter	Symbol	Limits	Unit
Peak reverse voltage	$V_{RM}$	40	V
DC Reverse Voltage	$V_R$	35	V
Peak forward Current	$I_{FSM}$	225	mA
Average Rectified Output Current	$I_O$	100	mA
Surge current(1s)	$I_{surge}$	400	mA
Power Dissipation	$P_D$	200	mW
Junction temperature	$T_j$	125	°C
Storage temperature	$T_{STG}$	-55 to+125	°C

### ELECTRICAL CHARACTERISTICS @ Ta=25°C unless otherwise specified

Parameter	Symbol	Min.	Typ.	Max.	Unit	Conditions
Forward voltage	$V_F$			1.2	V	$I_F=100mA$
Reverse current	$I_R$			10	nA	$V_R=20V$
Capacitance between terminals	$C_T$			5	pF	$V_R=0.5V, f=1MHz$

Silicon Epitaxial Planar Diode

**1SS380**

TYPICAL CHARACTERISTICS @  $T_a=25^\circ\text{C}$  unless otherwise specified

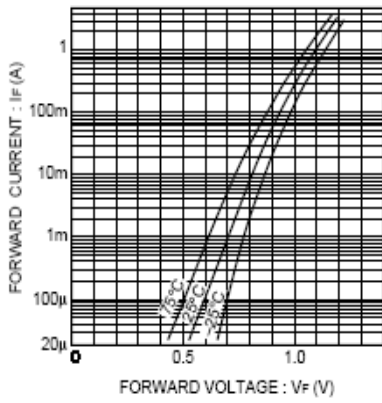


Fig. 1 Forward characteristics

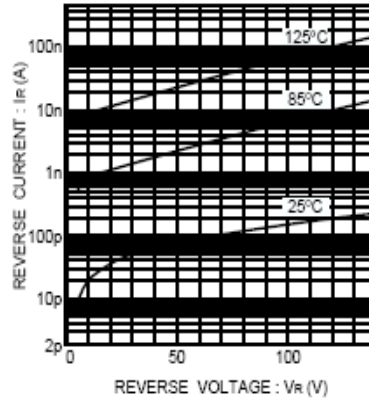


Fig. 2 Reverse characteristics

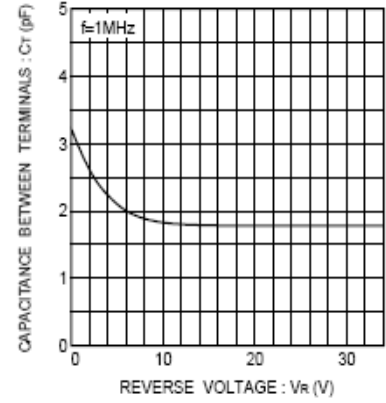


Fig. 3 Capacitance between terminals characteristics

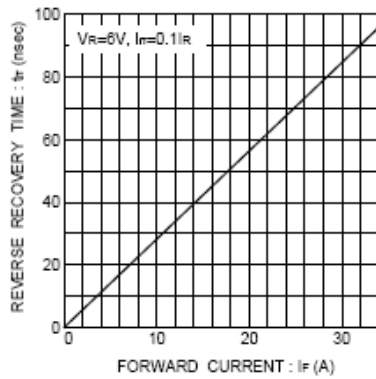


Fig. 4 Reverse recovery time characteristics

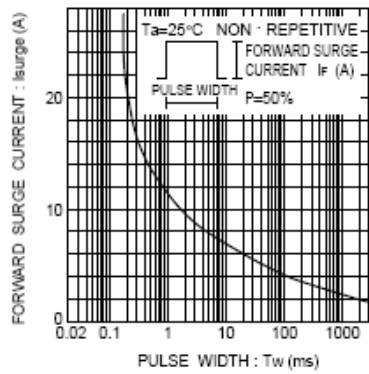


Fig. 5 Surge current characteristics

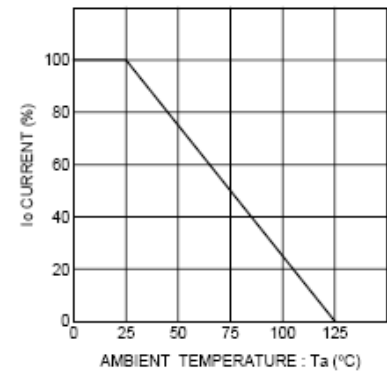


Fig. 6 Derating curve (mounting on glass epoxy PCBs)

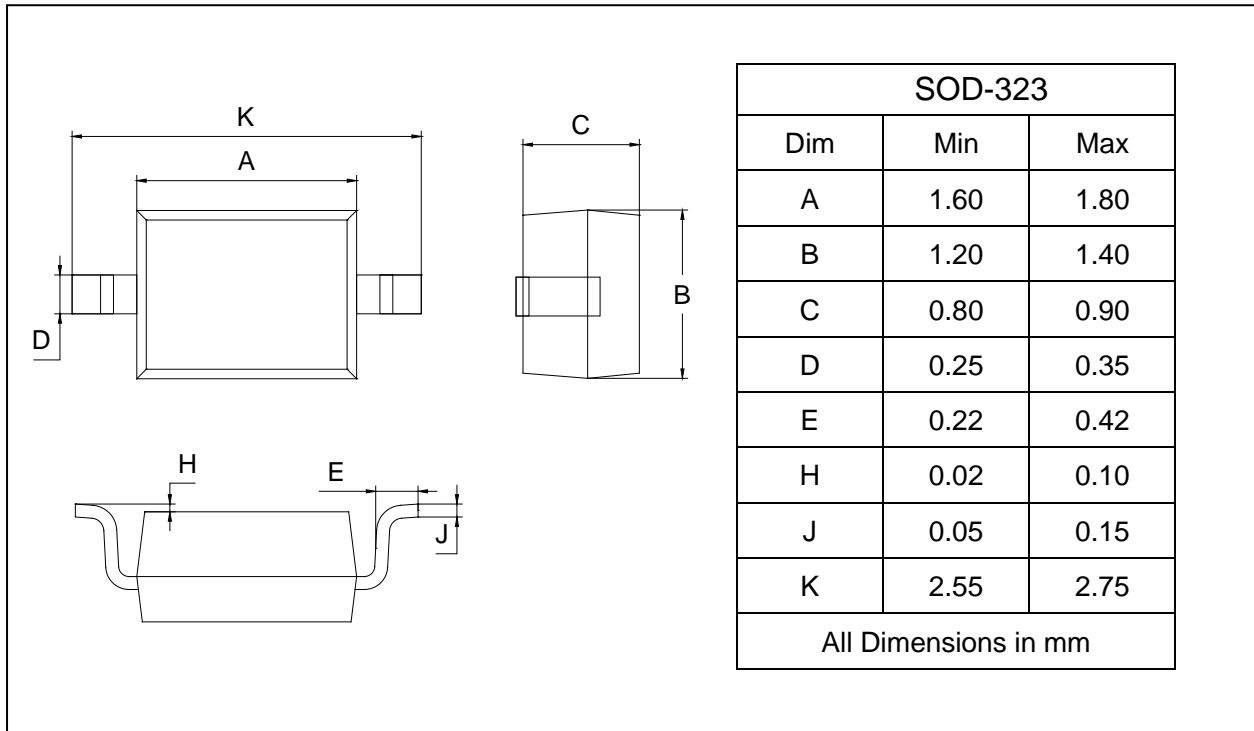
## Silicon Epitaxial Planar Diode

**1SS380**

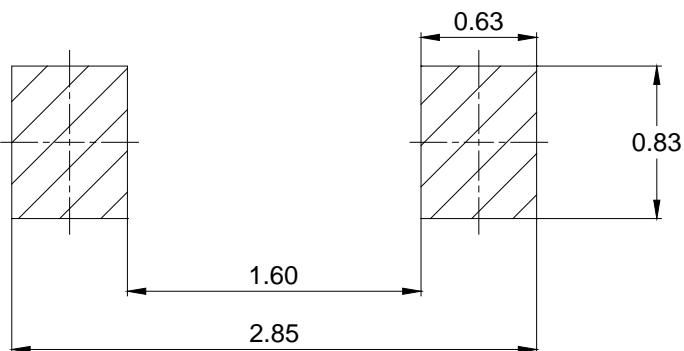
### PACKAGE OUTLINE

Plastic surface mounted package

SOD-323



### SOLDERING FOOTPRINT



Unit: mm

### PACKAGE INFORMATION

Device	Package	Shipping
1SS380	SOD-323	3000pcs / Tape & Reel