

Schottky Barrier Diode

B0560W

FEATURES

- Low forward voltage drop.
- Guard ring construction for transient Protection.
- High conductance.

HF

1 CATHODE 2 ANODE



SOD-123

APPLICATIONS

- 0.5A surface mount schottky barrier rectifier.

ORDERING INFORMATION

Type No.	Marking	Package Code
B0560W	SG	SOD-123

MAXIMUM RATING @ Ta=25°C unless otherwise specified

Characteristic	Symbol	Value	Unit
Peak Repetitive Reverse Voltage	V_{RRM}	60	V
Working Peak Reverse Voltage	V_{RWM}		
DC Reverse Voltage	V_R		
Average Rectified Output Current	I_O	0.5	A
Non-Repetitive Peak Forward Surge Current 8.3ms single half sine-wave superimposed on rated load	I_{FSM}	5.5	A
Power Dissipation	P_d	410	mW
Typical Thermal Resistance Junction to Ambient	$R_{\theta JA}$	244	°C/W
Operating and Storage Temperature Range	T_j, T_{stg}	-65 to +125	°C

Schottky Barrier Diode

B0560W

ELECTRICAL CHARACTERISTICS @ Ta=25°C unless otherwise specified

Characteristic	Symbol	MIN	TYP	MAX	Unit	Test Conditions
Minimum Reverse Breakdown Voltage	$V_{(BR)R}$	60			V	$I_R=100\mu A$
Maximum Forward Voltage Drop	V_{FM}		0.62	0.7	V	$I_F=0.5A, T_j=25^\circ C$
Maximum Leakage Current	I_{RM}			0.1	mA	$V_R=60V, T_j=25^\circ C$
Junction Capacitance	C_J		30		pF	$f=1MHz, V_R=4V$

TYPICAL CHARACTERISTICS @ Ta=25°C unless otherwise specified

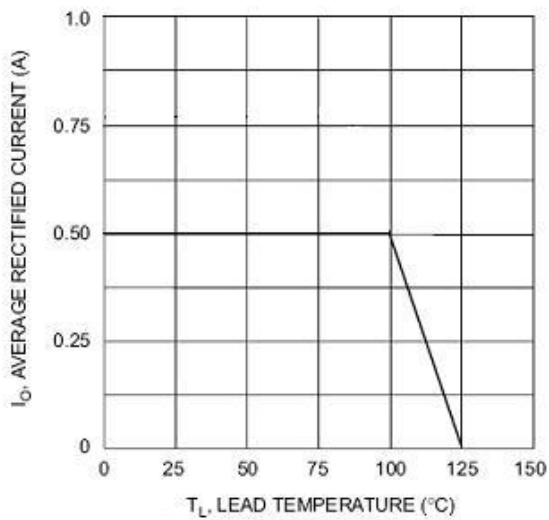


Fig. 1 Forward Current Derating Curve

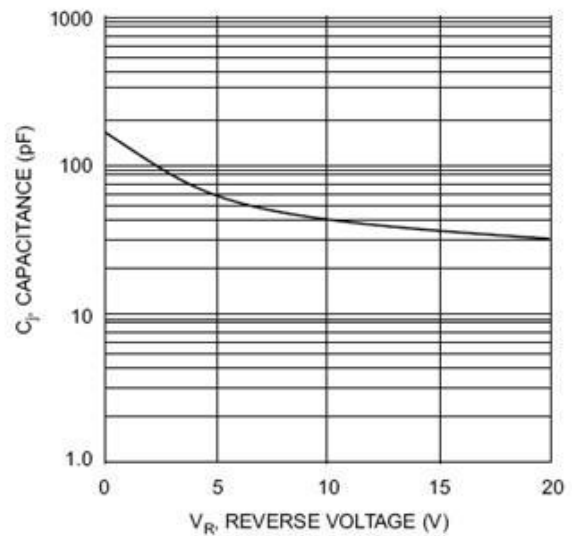


Fig. 2 Typ. Junction Capacitance vs Reverse Voltage

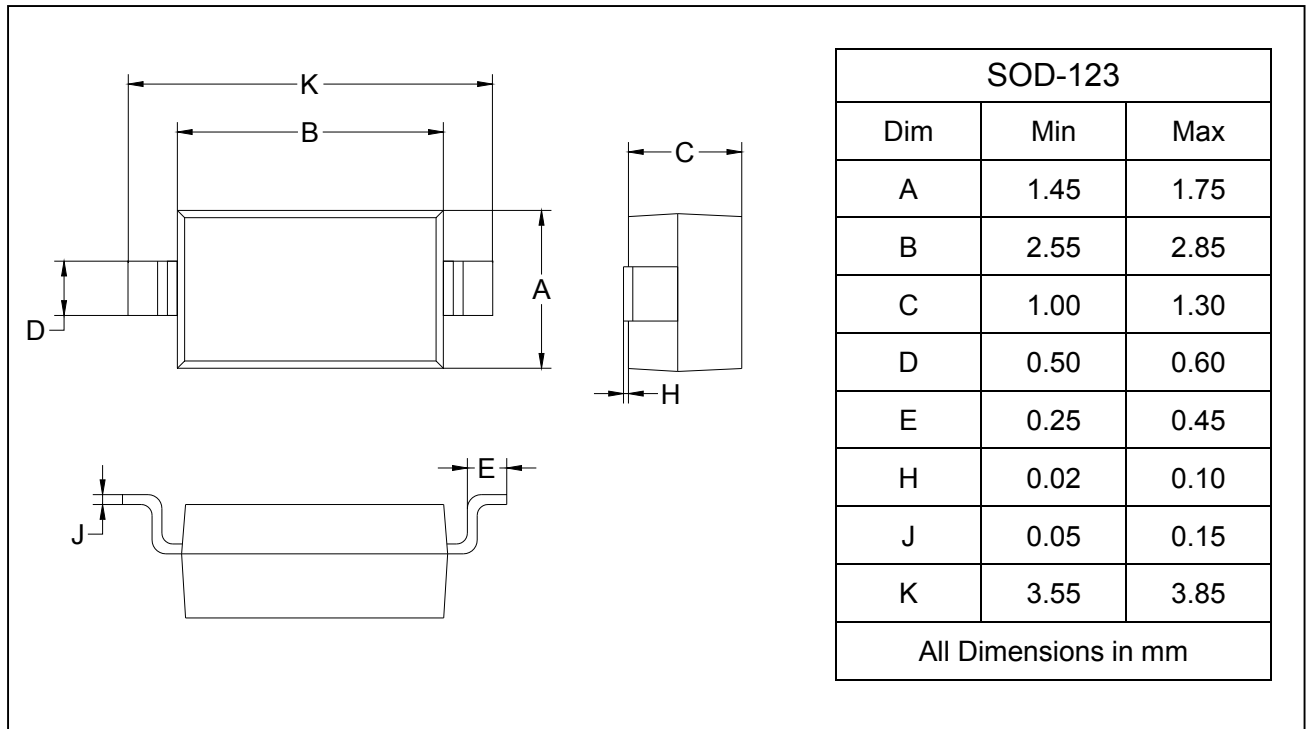
Schottky Barrier Diode

B0560W

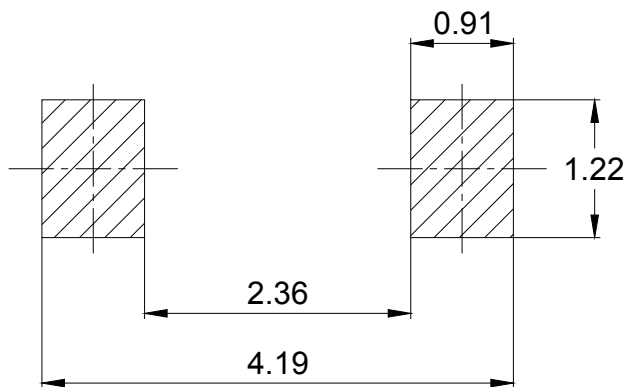
PACKAGE OUTLINE

Plastic surface mounted package

SOD-123



SOLDERING FOOTPRINT



Unit: mm

PACKAGE INFORMATION

Device	Package	Shipping
B0560W	SOD-123	3000pcs / Tape & Reel