

Features

- High reliability
- Small surface mounting type
- Low reverse current and low forward voltage

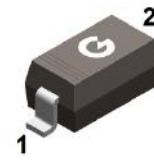
HF

Typical Applications

- For general purpose applications

Mechanical Data

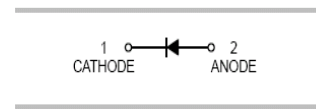
- Case: SOD-123, SOD-323
- Molding compound, UL flammability classification rating 94V-0
- Terminals: Tin plated leads, solderable per MIL-STD-202, Method 208



SOD-123



SOD-323



Ordering Information

Part Number	Package	Shipping	Marking Code
B5818WH	SOD-123	3000 pcs / Tape & Reel	SKH
B5818WSH	SOD-323	3000 pcs / Tape & Reel	SKH
B5819WH	SOD-123	3000 pcs / Tape & Reel	SLH
B5819WSH	SOD-323	3000 pcs / Tape & Reel	SLH

Maximum Ratings (@ T_A = 25°C unless otherwise specified)

Parameter	Symbol	B5818W(S)H	B5819W(S)H	Units
Peak Repetitive Reverse Voltage	V _{RRM}	30	40	V
RMS Reverse Voltage	V _{RMS}	21	28	V
Maximum Average Forward Output Current	I _{F(AV)}	1		A
Peak Forward Surge Current, 8.3ms Single Half-sine-wave	I _{FSM}	10		A

Thermal Characteristics

Parameter	Symbol	B5818WH/B5819WH	B5818WSH/B5819WSH	Units
Power Dissipation	P _D	500	250	mW
Typical Thermal Resistance per leg	R _{θJA} *	250	500	°C / W
Typical Thermal Resistance per leg	R _{θJL}	162	323	°C / W
Typical Thermal Resistance per leg	R _{θJC}	138	276	°C / W
Operating Junction Temperature Range	T _J	-55 to +150		°C
Storage Temperature Range	T _{STG}	-55 to +150		°C

* Part mounted on FR-4 board with recommended pad layout

Electrical Characteristics (@ T_A = 25°C unless otherwise specified)

Parameter	Symbol	Test conditions	Min.	Typ.	Max.	Units
Reverse Breakdown Voltage	V _{(BR)R}	I _R = 1mA B5818W(S)H	30	-	-	V
		I _R = 1mA B5819W(S)H	40	-	-	V
Forward Voltage	V _F *	I _F = 1A B5818W(S)H	-	-	0.55	V
		I _F = 1A B5819W(S)H	-	-	0.60	
		I _F = 3A B5818W(S)H	-	-	0.875	
		I _F = 3A B5819W(S)H	-	-	0.90	
Maximum Peak Reverse Current	I _R **	V _R = 30V B5818W(S)H	-	-	1	mA
		V _R = 40V B5819W(S)H	-	-	1	
Capacitance Between Terminals	C _T	V _R = 4V, f = 1MHz	-	39	120	pF
*Pulse width ≤380 us, Duty cycle < 2%						
**pulse test , tp≤5ms						

Ratings and Characteristic Curves (@ $T_A = 25^\circ\text{C}$ unless otherwise specified)

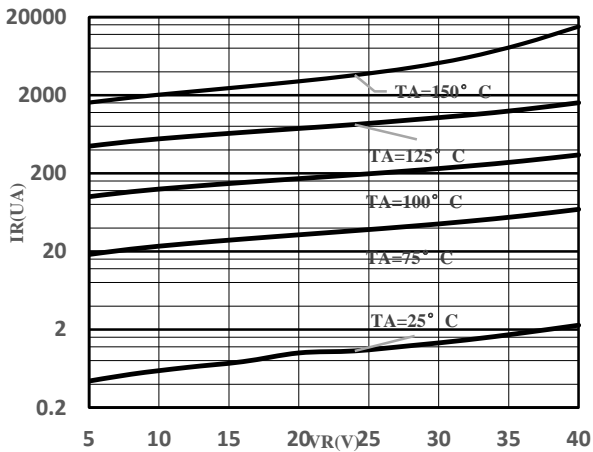


Fig.1- Typical Reverse Characteristic

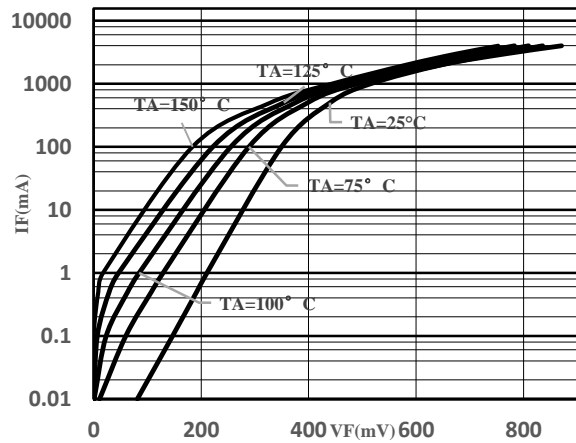


Fig.2- Typical Forward Characteristics

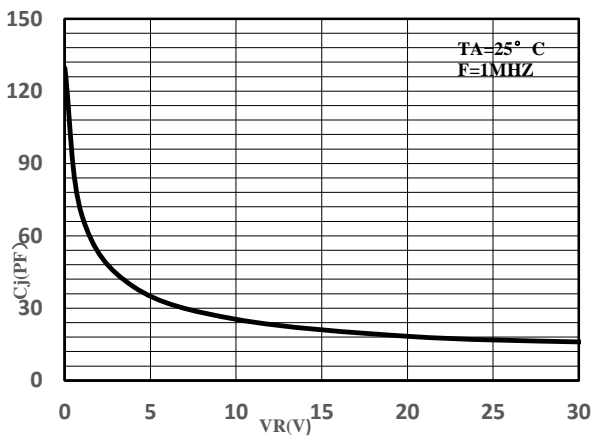


Fig.3- Capacitance Characteristics

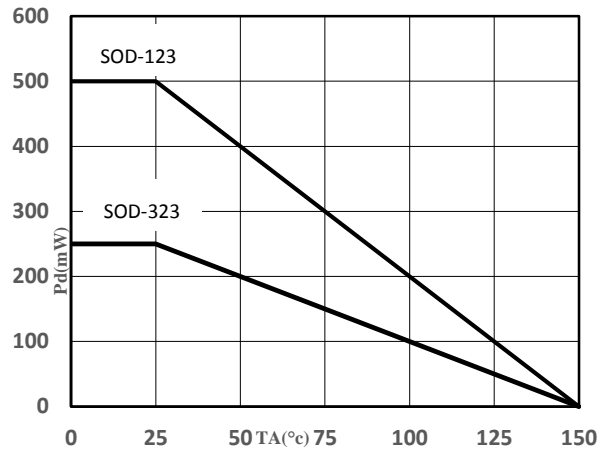
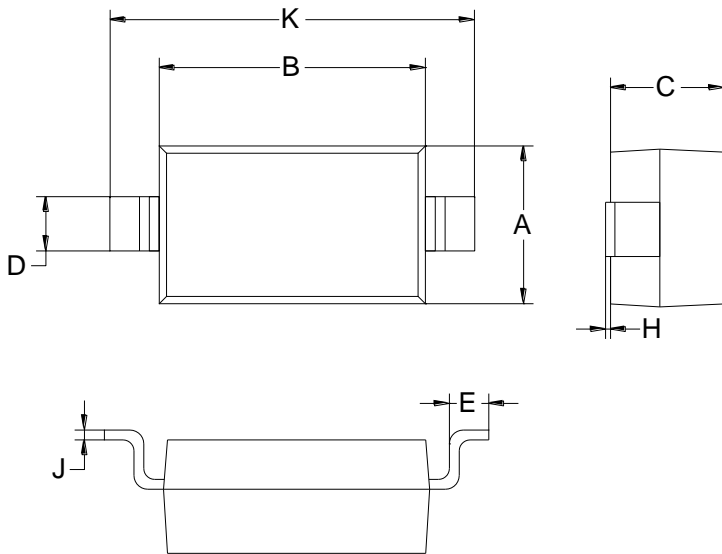


Fig.4- Derating Curve

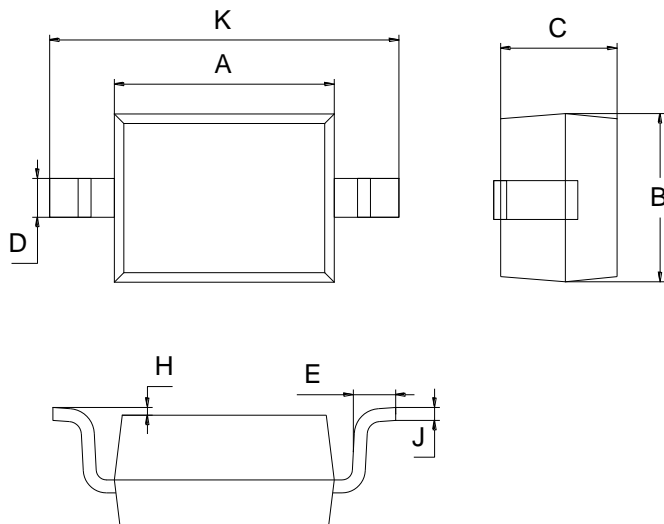
Package Outline Dimensions (unit: mm)

SOD-123



SOD-123		
Dim	Min	Max
A	1.45	1.75
B	2.55	2.85
C	1.00	1.30
D	0.50	0.60
E	0.25	0.45
H	0.02	0.10
J	0.05	0.15
K	3.55	3.85

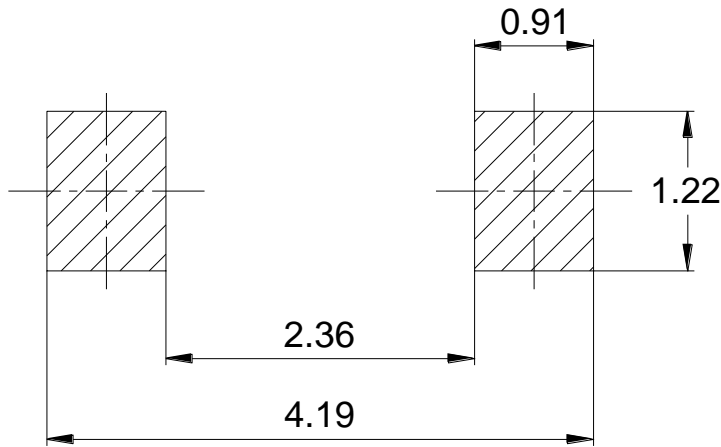
SOD-323



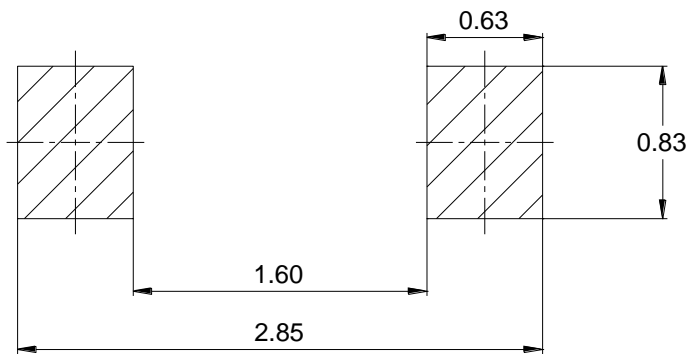
SOD-323		
Dim	Min	Max
A	1.60	1.80
B	1.20	1.40
C	0.80	0.90
D	0.25	0.35
E	0.22	0.42
H	0.02	0.10
J	0.05	0.15
K	2.55	2.75

Mounting Pad Layout (unit: mm)

SOD-123



SOD-323



IMPORTANT NOTICE

Galaxy Microelectronics (GME) reserves the right to make changes without further notice to any product herein to make corrections, modifications, improvements, or other changes. GME does not assume any liability arising out of the application or use of any product described herein; neither does it convey any license under its patent rights, nor the rights of others.