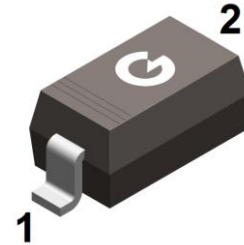
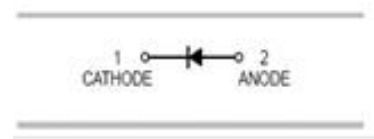


Features

- Low capacitance.
- High switching speed.
- Low leakage current.
- Small and flat lead SMD plastic package.
- Flat leads:excellent coplanarity and improved Thermal behavior.

HF



SOD-123

Typical Applications

- Ultra high-speed switching.
- Voltage clamping.

Mechanical Data

- Case: SOD-123
- Terminals: solderable per MIL-STD-202, Method 208.

Ordering Information

Part Number	Package	Shipping	Marking Code
BAS40H	SOD-123	3000 pcs / Tape & Reel	AJ

Maximum Ratings (@T_A=25°C unless otherwise specified)

Parameter	Symbol	Limits	Unit
Peak Repetitive Reverse Voltage	V _R RM		
Working Peak Reverse Voltage	V _R WM	40	V
DC Reverse Voltage	V _R		
Forward Continuous Current *	I _F	200	mA
Peak Forward Surge Current@8.3ms	I _F SM	600	mA
Power Dissipation *	P _D	375	mW

* part mounted on FR-4 board with recommended pad layout

Thermal Characteristics

Parameter	Symbol	Limits	Unit
Thermal Resistance Junction to Ambient Air	$R_{\theta JA}$	267	$^{\circ}C/W$
Operating Junction Temperature Range	T_j	-55 to +125	$^{\circ}C$
Storage Temperature Range	T_{STG}	-55 to +150	$^{\circ}C$

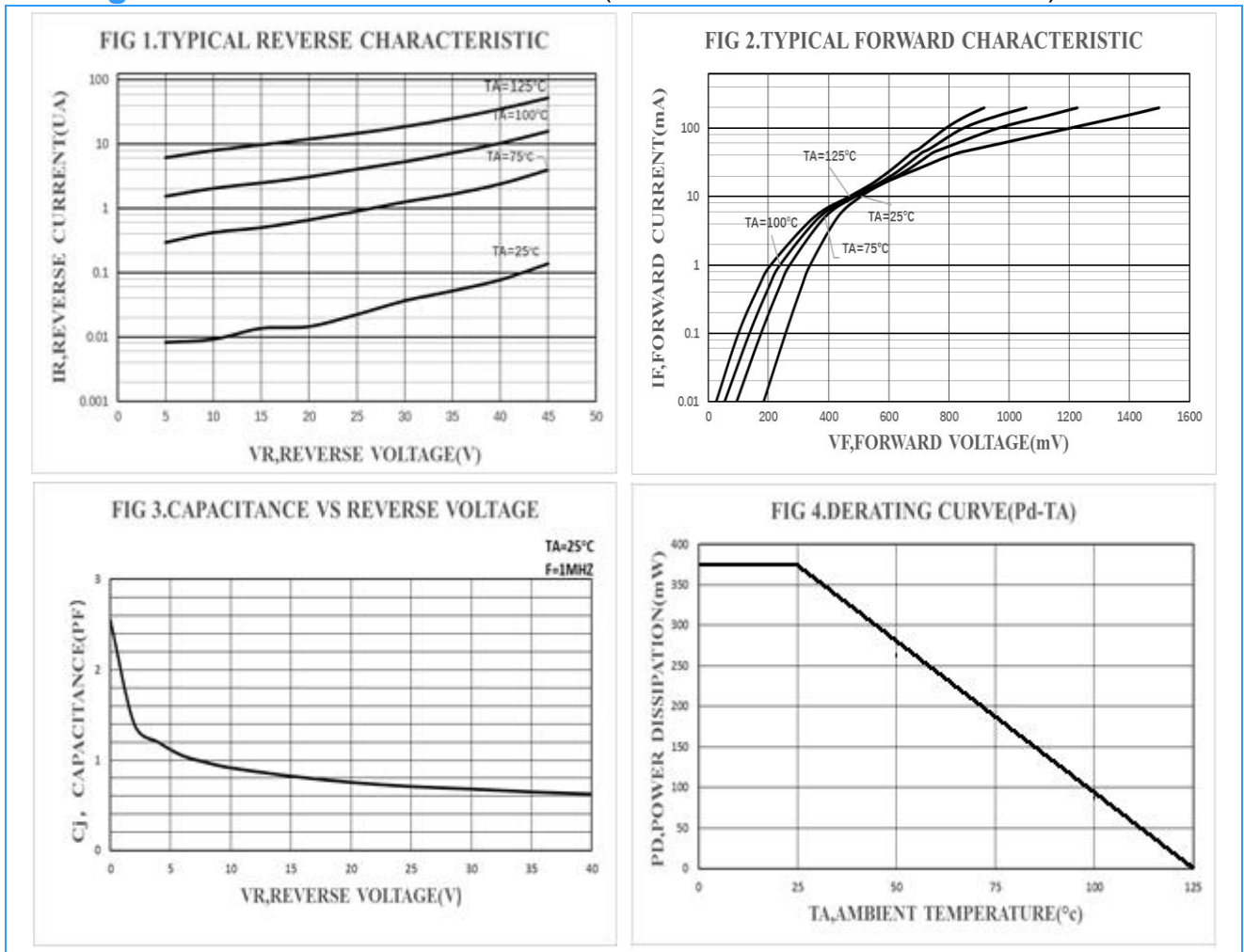
Electrical Characteristics (@ $T_A=25^{\circ}C$ unless otherwise specified)

Parameter	Symbol	Conditions	Min	Typ	Max	Unit
Forward Voltage	V_F	$I_F=1mA$			0.38	V
		$I_F=40mA$			1	V
Reverse Current	I_R	$V_R=30V$			1	μA
		$V_R=40V$			10	μA
Diode Capacitance	C_T	$V_R=0V, f=1MHz$		2.5	5	pF
Reverse Recovery Time	t_{rr}	$I_F=I_R=10mA$ $I_{rr}=1.0mA, R_L=100\Omega$			5	ns

*1: pulse test, $t_p \leq 300\mu s$

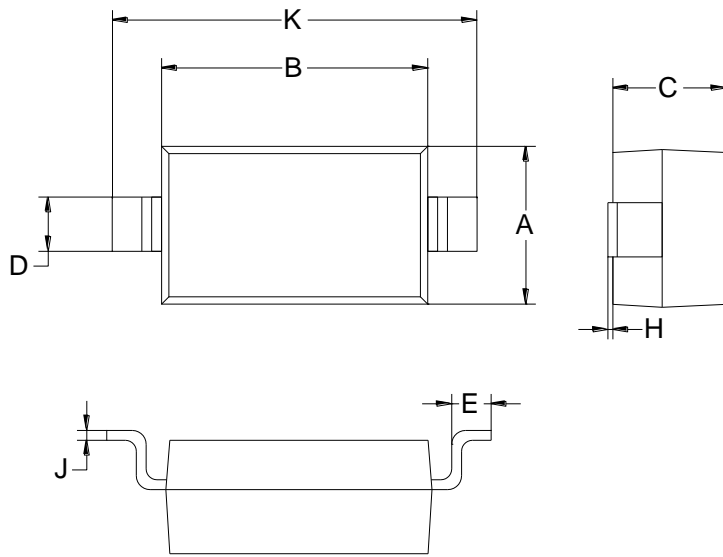
*2: pulse test, $t_p \leq 5ms$

Ratings and Characteristic Curves ($T_A=25^{\circ}C$ unless otherwise noted)



Package Outline Dimensions(unit:mm)

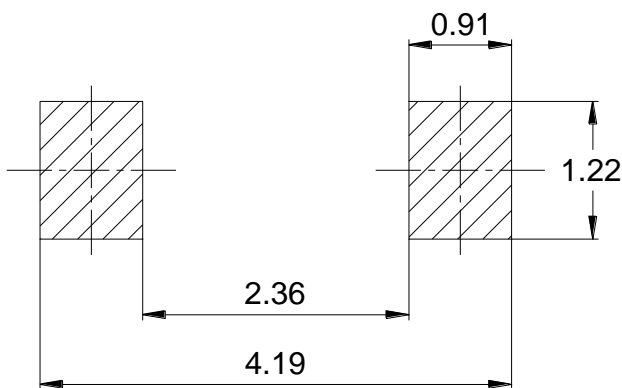
SOD-123



SOD-123		
Dim	Min	Max
A	1.45	1.75
B	2.55	2.85
C	1.00	1.30
D	0.50	0.60
E	0.25	0.45
H	0.02	0.10
J	0.05	0.15
K	3.55	3.85

Mounting Pad Layout(unit:mm)

SOD-123



IMPORTANT NOTICE

Galaxy Microelectronics (GME) reserves the right to make changes without further notice to any product herein to make corrections, modifications, improvements, or other changes. GME does not assume any liability arising out of the application or use of any product described herein; neither does it convey any license under its patent rights, nor the rights of others.