

Features

- Low forward voltage
- Fast switching time
- Surface mount package ideally suited for automatic insertion

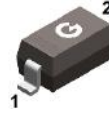
HF

Applications

- Schottky barrier detector and switching diodes

Mechanical Data

- Case: SOD-123, SOD-323, SOD-523, DFN1006-2
- Molding compound: UL flammability classification rating 94-0
- Terminals: Tin-plated; solderability per MIL-STD-202, Method 208



BAT42W
SOD-123



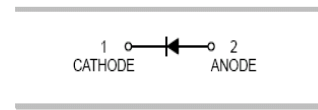
BAT42WS
SOD-323



BAT42X
SOD-523



BAT42L
DFN1006-2



Ordering Information

Part Number	Package	Shipping Quantity	Marking Code
BAT42W	SOD-123	3000 pcs / Tape & Reel	S7
BAT42WS	SOD-323	3000 pcs / Tape & Reel	S7
BAT42X	SOD-523	3000 pcs / Tape & Reel	S7
BAT42L	DFN1006-2	10000 pcs / Tape & Reel	S7

Maximum Ratings (@ T_A = 25°C unless otherwise specified)

Parameter	Symbol	Value	Unit
Peak Repetitive Reverse Voltage	V _{RRM}	30	V
Working Peak Reverse Voltage	V _{RWM}	30	V
DC Reverse Voltage	V _R	30	V
RMS Reverse Voltage	V _{R(RMS)}	21	V
Maximum Average Forward Output Current	I _{F(AV)}	100	mA
Repetitive Peak Forward Current, t = 1.0s	I _{FRM}	500	mA
Peak Forward Surge Current, t = 10ms	I _{FSM}	4	A

Thermal Characteristics

Parameter	Symbol	SOD-123	SOD-323	SOD-523	DFN1006-2	Unit
Power Dissipation	P_D	400	200	150	100	mW
Thermal Resistance Junction-to-Air *1	$R_{\theta JA}$	250	500	667	1000	°C/W
Operating junction Temperature	T_J	-55 ~ +125				°C
Storage Temperature Range	T_{STG}	-55 ~ +150				°C

Electrical Characteristics (@ $T_A = 25^\circ\text{C}$ unless otherwise specified)

Parameter	Symbol	Test Condition	Min.	Typ.	Max.	Unit
Reverse Breakdown Voltage	$V_{(BR)}$	$I_R = 100\mu\text{A}$	30	-	-	V
Forward Voltage *2	V_F	$I_F = 10\text{mA}$	-	-	0.40	V
		$I_F = 50\text{mA}$	-	-	0.65	V
		$I_F = 200\text{mA}$	-	-	1.00	V
Maximum Peak Reverse Current *3	I_R	$V_R = 25\text{V}$	-	-	500	nA
Capacitance Between Terminals	C_T	$V_R = 1\text{V}, f = 1\text{MHz}$	-	-	10	pF
Reverse Recovery Time	t_{rr}	$I_F = I_R = 10\text{mA}$ $I_{rr} = 0.1 * I_R, R_L = 100\Omega$	-	-	5	ns
Rectification Efficiency	η_V	$R_L = 15\Omega, C_L = 300\text{pF}$ $f = 45\text{MHz}$	80	-	-	%

Notes:

1. Part mounted on FR-4 board with recommended pad layout
2. Pulse test, $t_p \leq 300\mu\text{s}$
3. Pulse test, $t_p \leq 5\text{ms}$

Ratings and Characteristic Curves (@ $T_A = 25^\circ\text{C}$ unless otherwise specified)

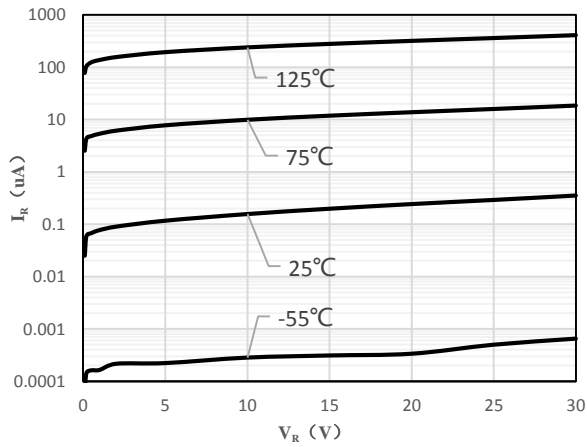


Fig 1 Typical Reverse Characteristic

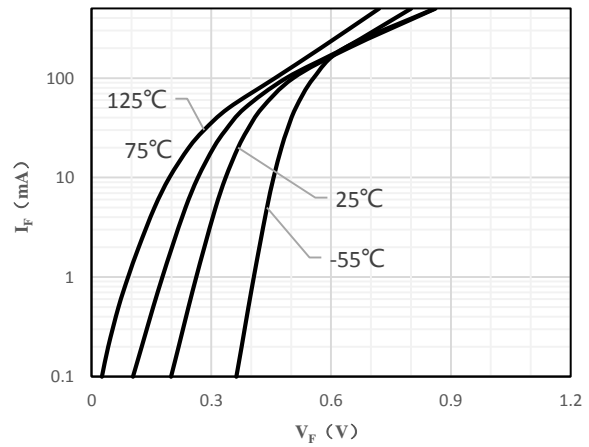


Fig 2 Typical Forward Characteristics

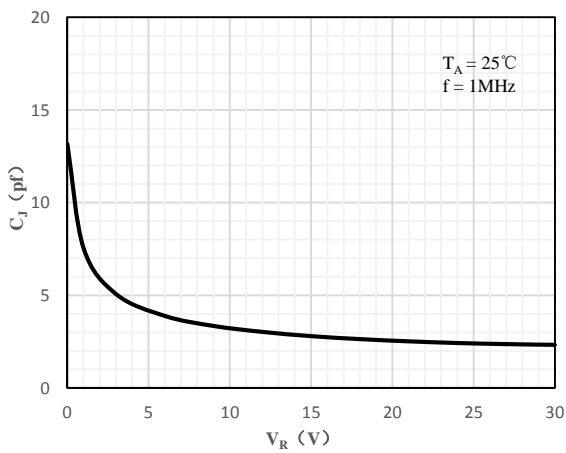


Fig 3 Capacitance Characteristics

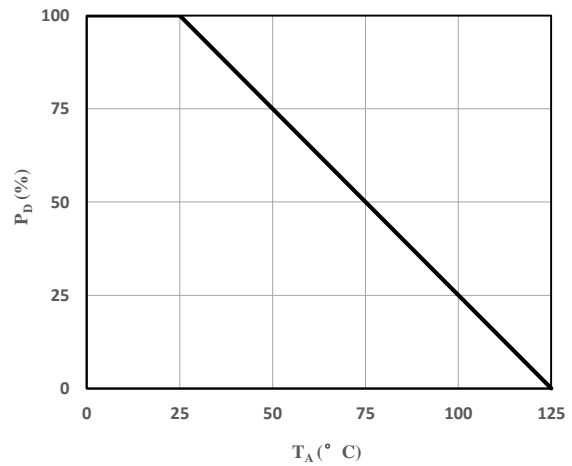


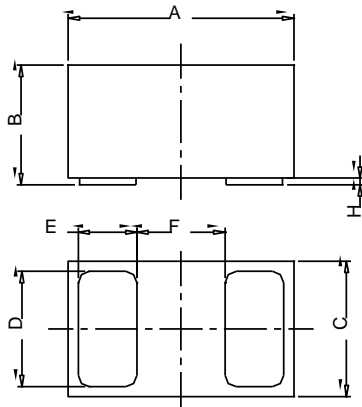
Fig 4 Derating Curve

Package Outline Dimensions (Unit: mm)

SOD-123	
Dimension	Min. / Max.
A	1.45 / 1.75
B	2.55 / 2.85
C	1.00 / 1.30
D	0.50 / 0.60
E	0.25 / 0.45
H	0.02 / 0.10
J	0.05 / 0.15
K	3.55 / 3.85

SOD-323	
Dimension	Min. / Max.
A	1.60 / 1.80
B	1.20 / 1.40
C	0.80 / 0.90
D	0.25 / 0.35
E	0.22 / 0.42
H	0.02 / 0.10
J	0.05 / 0.15
K	2.55 / 2.75

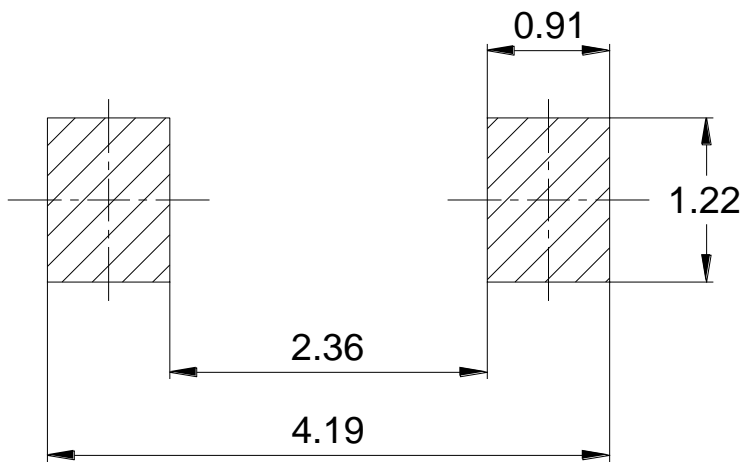
SOD-523	
Dimension	Min. / Max.
A	1.10 / 1.30
B	0.70 / 0.90
C	0.50 / 0.70
D	0.25 / 0.35
E	0.15 / 0.25
J	0.05 / 0.15
K	1.50 / 1.70



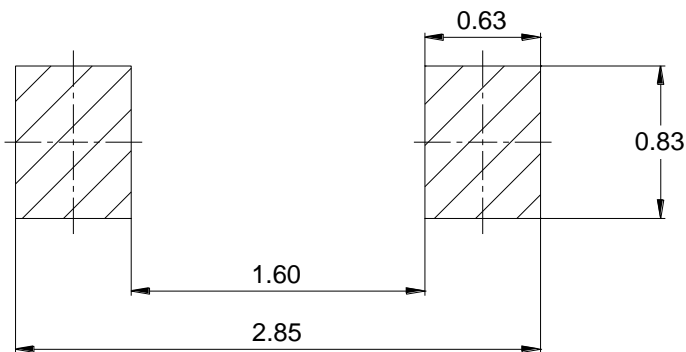
DFN1006-2			
Dimension	Min.	Typ.	Max.
A	0.95	1.00	1.075
B	0.47	0.50	0.53
C	0.55	0.60	0.675
D	0.45	0.50	0.55
E	0.20	0.25	0.30
F	-	0.40	-
H	0	0.03	0.05

Package Outline Dimensions (Unit: mm)

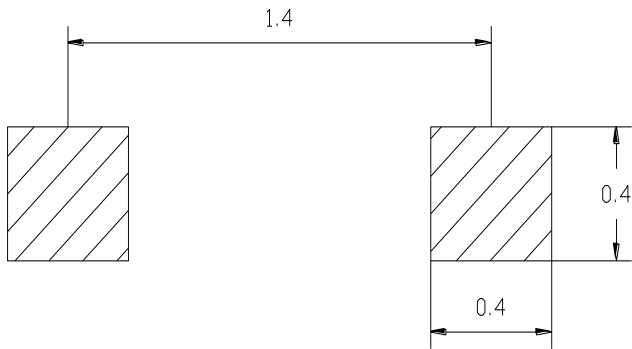
SOD-123



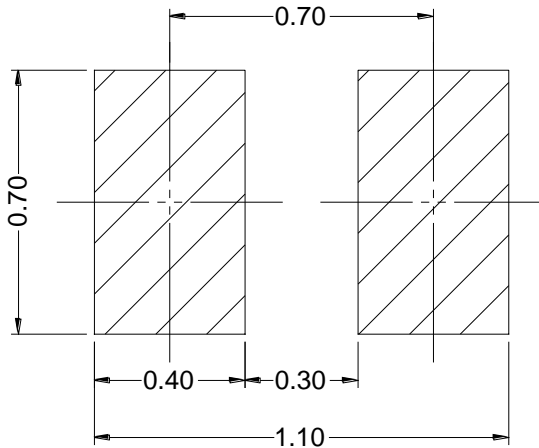
SOD-323



SOD-523



DFN1006-2



IMPORTANT NOTICE

Changzhou Galaxy Century Microelectronics (GME) reserves the right to make changes without further notice to any product information (copyrighted) herein to make corrections, modifications, improvements, or other changes. GME does not assume any liability arising out of the application or use of any product described herein; neither does it convey any license under its patent rights, nor the rights of others.