

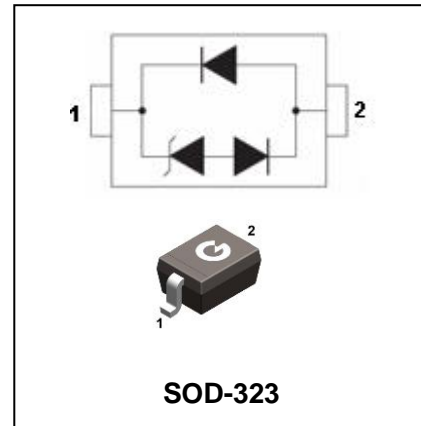
Ultralow Capacitance TVS Array

DLC03-DLC36

FEATURES

- 350 Watts Peak Pulse Power per Line ($t_p = 8/20\mu s$)
- Unidirectional & Bidirectional Configurations
- Replacement for MLV (0805)
- Protects One Power or I/O Port
- ESD Protection > 40 kilovolts
- Low Clamping Voltage
- Available in Multiple Voltage Types Ranging from 3V to 24V
- MSL 1

HF



APPLICATIONS

- Ethernet - 10/100/1000 Base T
- Cellular Phones
- Handheld - Wireless Systems
- Personal Digital Assistant (PDA)
- USB Interface

ORDERING INFORMATION

Type No.	Marking	Package Code
DLC03	3	SOD-323
DLC05	5	SOD-323
DLC08	8	SOD-323
DLC12	2	SOD-323
DLC15	6	SOD-323
DLC24	4	SOD-323
DLC36	7	SOD-323

MAXIMUM RATING @ $T_a=25^\circ C$ unless otherwise specified

Parameter	Symbol	Limits	Unit
Peak pulse power dissipation($t_p=8/20\mu s$) -SeeFigure 1	P_{PP}	350	W
Operating temperature	T_J	-55 to+150	$^\circ C$
Storage temperature	T_{STG}	-55 to+150	$^\circ C$

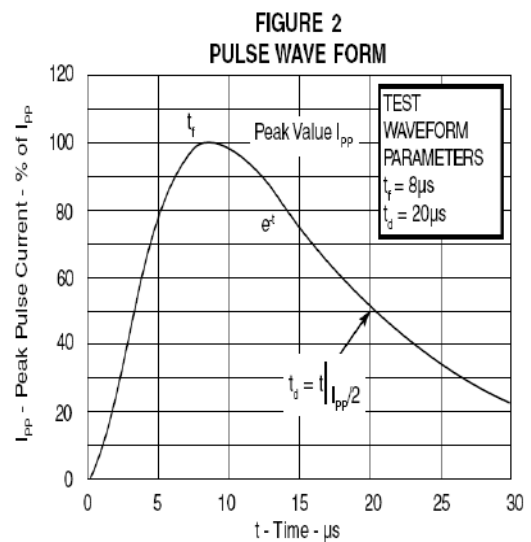
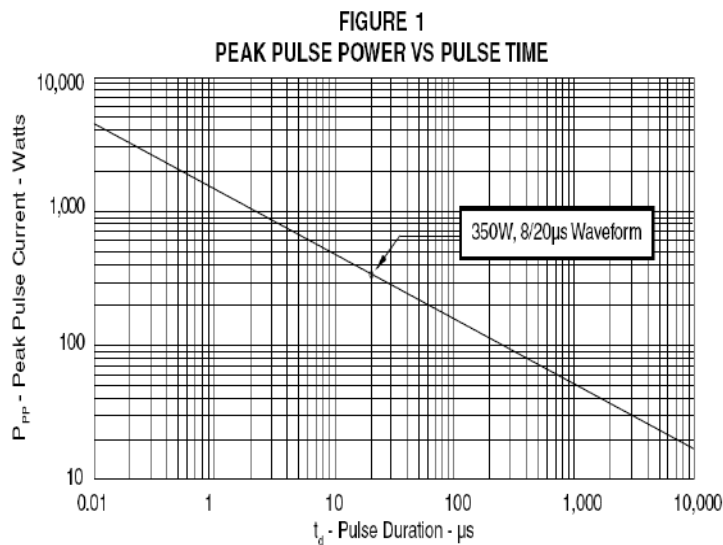
Ultralow Capacitance TVS Array

DLC03-DLC36

ELECTRICAL CHARACTERISTICS @ Ta=25°C unless otherwise specified

PART NUMBER	Rated Stand-off Voltage V_{WM} VOLTS	Minimum Breakdown Voltage @ 1mA $V_{(BR)}$ VOLTS	Maximum Clamping Voltage (See Fig. 2) @ $I_P = 1A$ V_C VOLTS	Maximum Clamping Voltage (See Fig. 2) @ 8/20 μ s $V_C @ I_{PP}$	Maximum Leakage Current @ V_{WM} I_D μ A	Typical Capacitance @ 0V, 1MHz C pF
DLC03	3.3	4.0	7.0	19.0V @ 20.0A	5	1
DLC05	5.0	6.0	9.8	20V @ 20A	5	1
DLC08	8.0	8.5	13.4	18.5V @ 17.0A	2	1
DLC12	12.0	13.3	19.0	28.6V @ 11.0A	1	1
DLC15	15.0	16.7	24.0	31.8V @ 10.0A	1	1
DLC24	24.0	26.7	43.0	56.0V @ 6.0A	1	1
DLC36	36.0	40.0	48.0	90.0V @ 4.0A	1	1.5

TYPICAL CHARACTERISTICS @ Ta=25°C unless otherwise specified



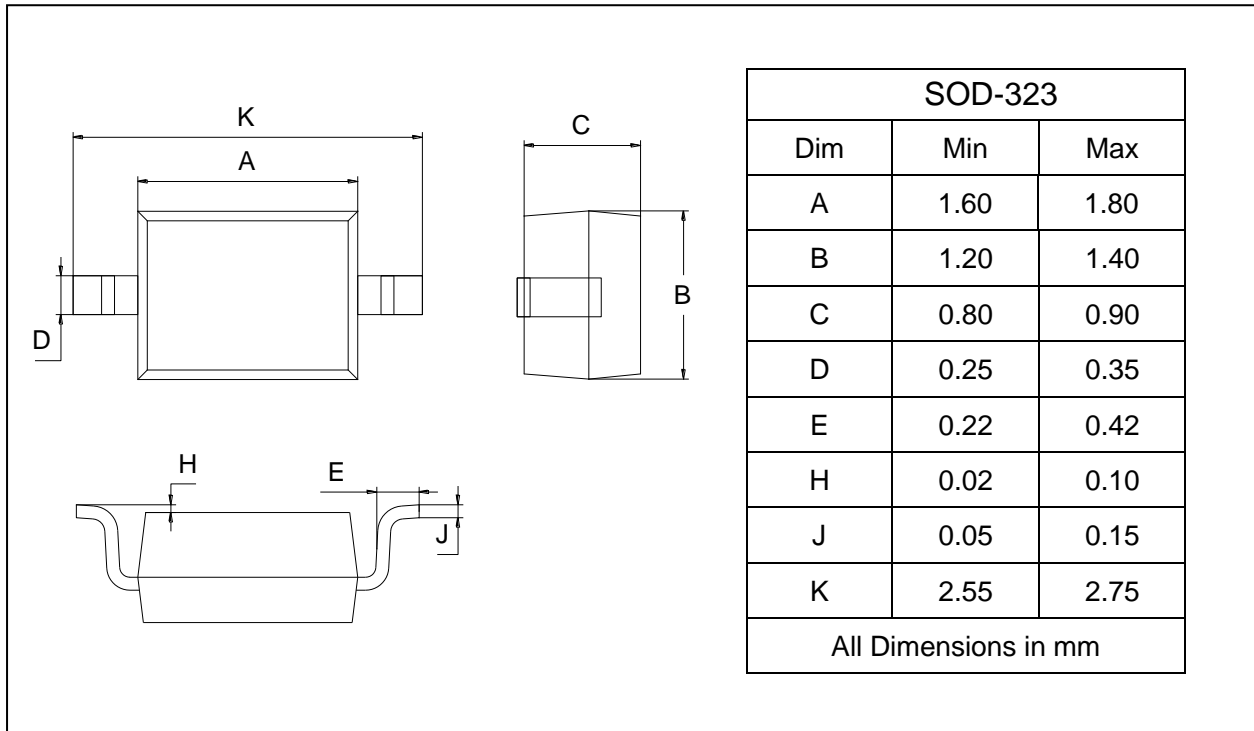
Ultralow Capacitance TVS Array

DLC03-DLC36

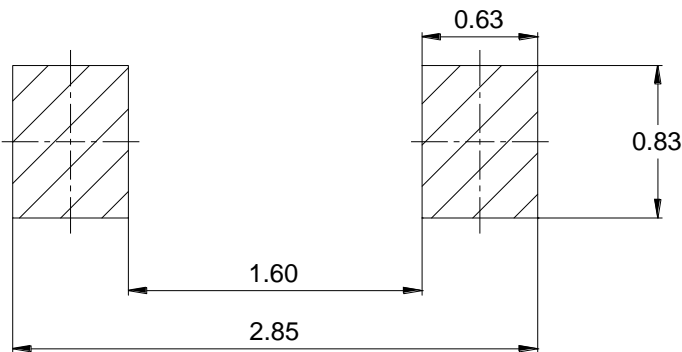
PACKAGE OUTLINE

Plastic surface mounted package

SOD-323



SOLDERING FOOTPRINT



Unit: mm

PACKAGE INFORMATION

Device	Package	Shipping
DLC03-DLC36	SOD-323	3000 pcs / Tape & Reel